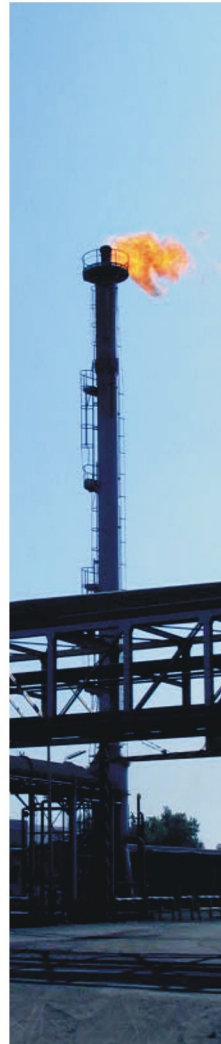
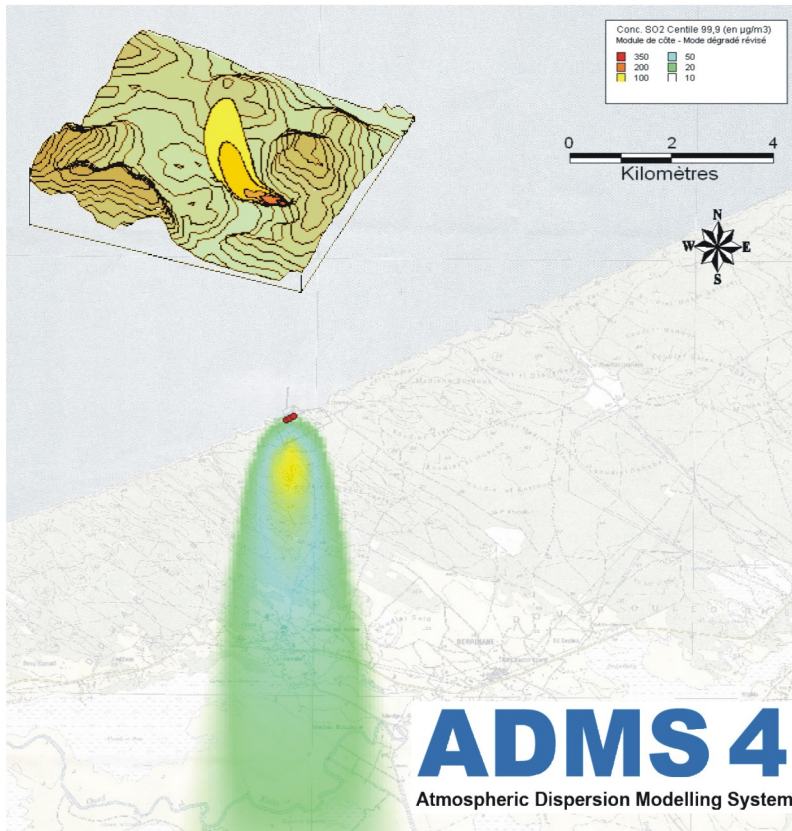


## Air emission modelling and mapping



### Sogreah Magelis' prestation

Sogreah assists its clients by conducting atmospheric pollutant dispersion studies using modelling techniques:

- Environmental Impact Assesments
- Applications for licences to operate
- Quantitative health risk assessments



When industries need to apply an air emission licence, modelling is a key tool to ensure that a facility is in compliance with air quality standards or objectives. The model will provide a quantification of atmospheric pollutants (NO<sub>x</sub>, SO<sub>2</sub>, O<sub>3</sub>, CO, PM10,...). Model is also a tool for optimization of the equipment design such as: stack height, stack diameter, air treatment systems like scrubbers, etc.

**SOGREAH Magelis** performs modelling (**ADMS 4**) and mapping (**ArcGIS** or **MapInfo**) of atmospheric pollutants. The results can be used to design equipments or to conduct impact assessment on air quality and health risk assessment.

**ADMS 4 model of dispersion**, developed by CERC (Cambridge Environmental Research Consultants Ltd), is a new-generation atmospheric dispersion model designed to meet the latest statutory requirements. It has become the benchmark tool used for assessing impacts and industrial risks. ADMS 4 has been validated by the "Model Validation Kit" (the European reference tool), European directive 2002/49/EC, and numerous major industrial firms.



### Your contact

[julien.correa@sogreah.fr](mailto:julien.correa@sogreah.fr)  
Tél. +33 (0)4 37 65 38 00  
Julien Correa  
Sogreah Magelis  
38 place des pavillons  
69007 Lyon - France

[www.sogreah.fr/magelis](http://www.sogreah.fr/magelis)